



GMT MONTHLY MEMBERSHIP PROGRESS REPORT

Results as of: 10/31/2023

Multiple District 105

LOCATION: ENGLAND

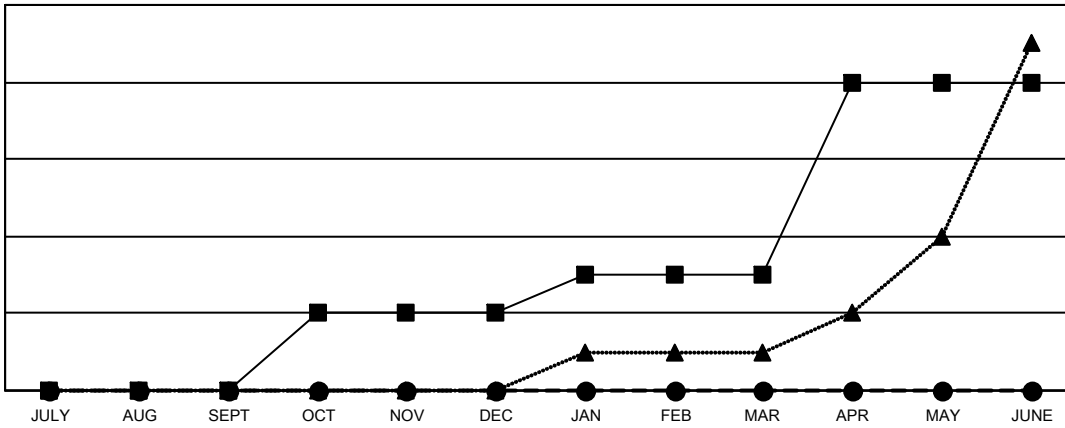
GMT: OPEN

GMT CA 4

Clubs			
RESULTS FOR 2023-2024			
QUARTER	NEW CLUB GOAL	NEW CLUBS	DROPPED CLUBS
JULY/AUG/SEPT	0	0	4
OCT/NOV/DEC	2	0	0
JAN/FEB/MAR	1	0	0
APR/MAY/JUNE	5	0	0

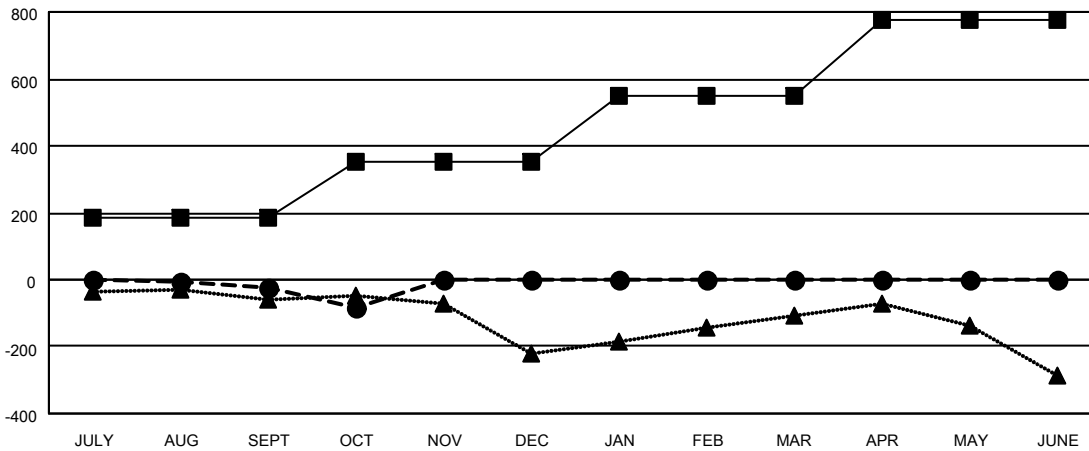
Members			
RESULTS FOR 2023-2024			
QUARTER	MEMBER GROWTH NET GOAL	MEMBER GROWTH ACTUAL	DROPPED MEMBERS ACTUAL (including transfers)
JULY/AUG/SEPT	187	255	241
OCT/NOV/DEC	163	84	130
JAN/FEB/MAR	197	0	0
APR/MAY/JUNE	228	0	0

GOALS AND ACTUAL NEW CLUBS CUMULATIVE



- - CURRENT YEAR GOALS FOR NEW CLUBS
- - CURRENT YEAR ACTUAL NEW CLUBS
- ▲ - LAST YEAR ACTUAL NEW CLUBS

GOALS AND ACTUAL MEMBERS CUMULATIVE



- - MEMBER GROWTH NET GOAL
- - MEMBER GROWTH ACTUAL
- ▲ - LAST YEAR MEMBERSHIP ACTUAL

DROPPED CLUBS: 4	167 CLUBS OF 564 ADDED 1 OR MORE NEW MEMBERS	GENDER DISTRIBUTION
		MALE 6,745 (69.14%)
		FEMALE 3,011 (30.86%)
DROPPED MEMBERS	CLICK HERE FOR CUMULATIVE MEMBERSHIP DATA	TOTAL FAMILY UNIT MEMBERS 1,339
DECEASED 49		FAMILY MEMBERS PAYING HALF DUES 682
CLUB CANCELLED 0		
OTHER 323		
TOTAL 372		